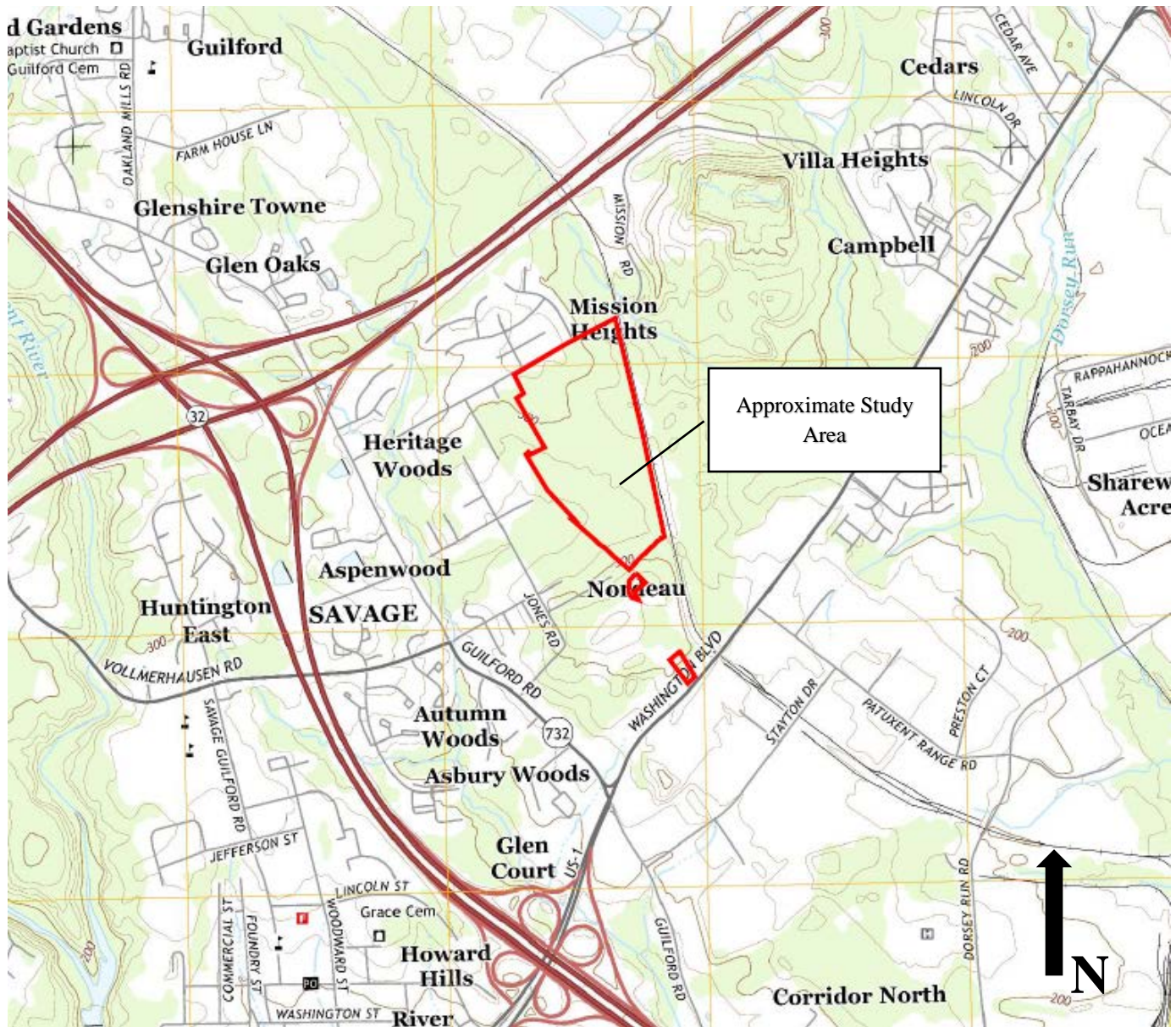


Appendix A

Figures



Reference: US Geological Survey Savage 7.5-Minute Quadrangle Topographic Map, 2014 obtained from EDR, Inc. ©

**Chase Lands
Jessup, Maryland**

Figure 1

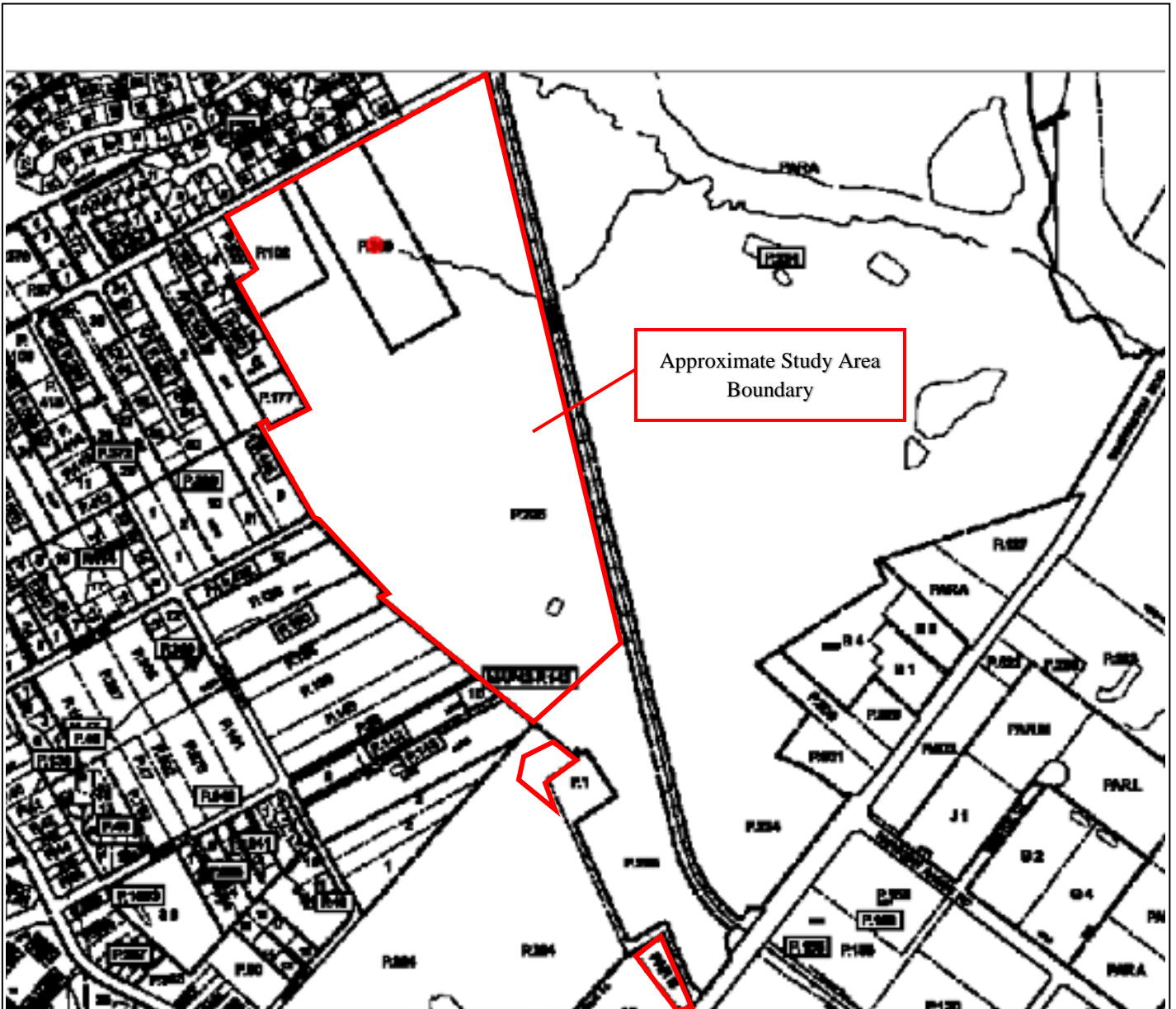
Site Location Map



**EA Engineering, Science, and
Technology, Inc., PBC.
225 Schilling Circle, Suite 400
Hunt Valley, Maryland 21031**

**Scale:
1:24,000**

**EA Project No.
1483545**



Source: <http://sdat.dat.maryland.gov/realproperty/maps/showmap.html?countyid=14&accountid=06+431577>
 Site Reconnaissance: 7 September 2016 and 16 September 2016

Chase Lands
 Jessup, Maryland

Figure 2
 Tax Map

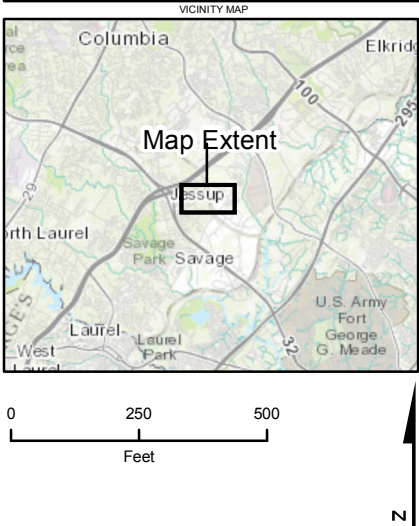
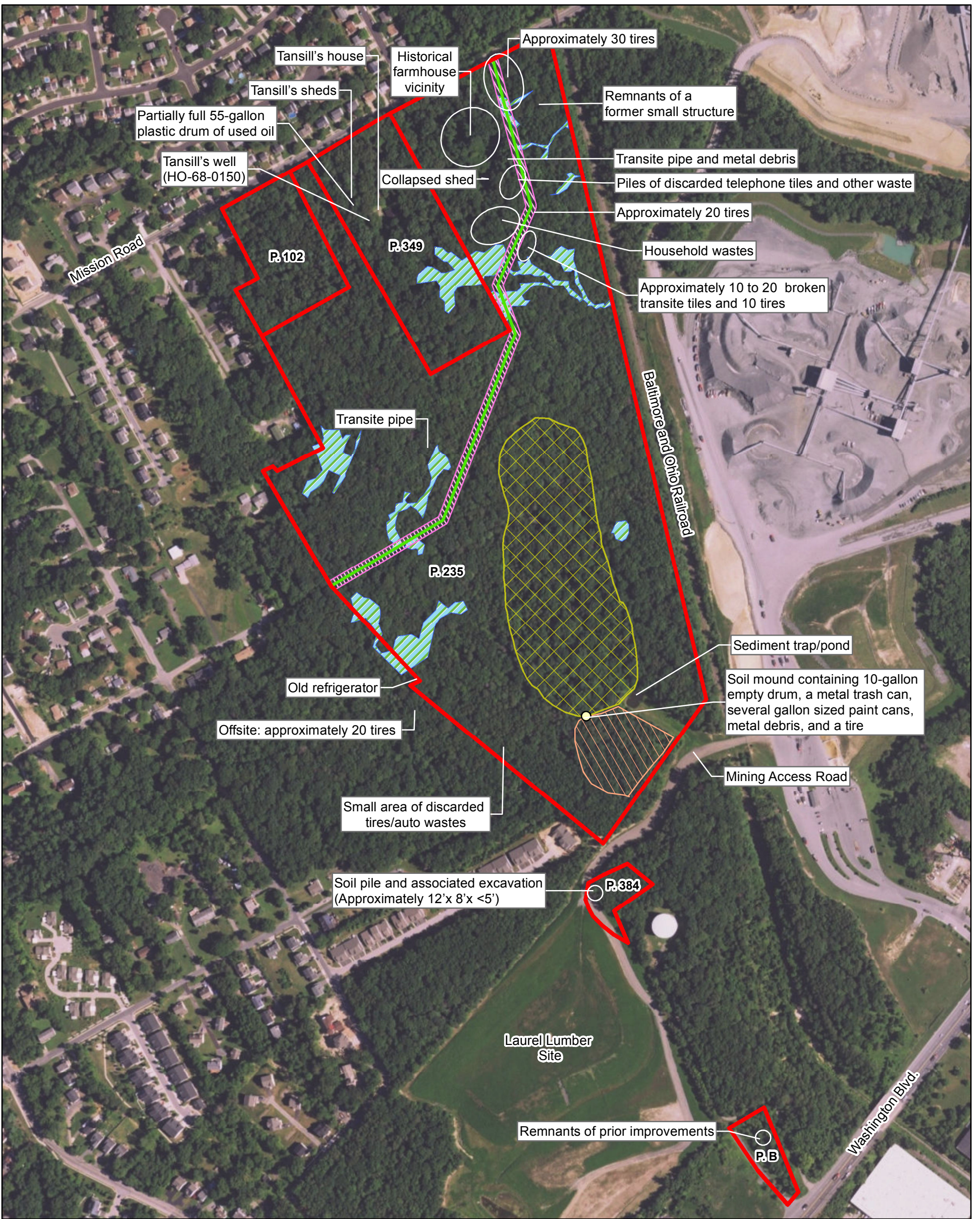


® EA Engineering, Science, and
 Technology, Inc., PBC
 225 Schilling Circle, Suite 400
 Hunt Valley, Maryland 21031

Scale: Not to scale

EA Project No.
 1483545

\\ovetong\GIS\StateandLocal\Northeast\Maryland\MissionRoad\Properties\MXD\Figure 3 - Site Features Map_20161128.mxd



Legend







-  Howard County Domestic/Industrial Waste Sewer Easement (2016 CNA)
-  Household Waste and Discarded Tires Throughout Easement
-  Approximate Extent of Intermittent Soil Mounds Without Evidence of Waste
-  Wetland (2016 CNA)
-  Approximate Property Boundary
-  Sprawling Area of Waste Including Approximately 30 to 40 Tires

Figure 3
Site Features Map
 Chase Lands Phase I ESA
 Jessup, MD

Map Date: 11/28/2016
 Source: ESRI, 2015
 Projection: NAD 1983 StatePlane
 Maryland FIPS 1900 Feet

